



Building Services at Crook Log Leisure Centre, Bexleyheath

Welcome to the 14th edition of the IDWe Ltd Quarterly Newsletter. We're pleased to share our latest news and recent projects, including a full commercial office strip-out and refurbishment that created a more open, efficient workspace. We also highlight our Pipe Freezing Services and more.

**One of London's
Leading M&E
Contractors**

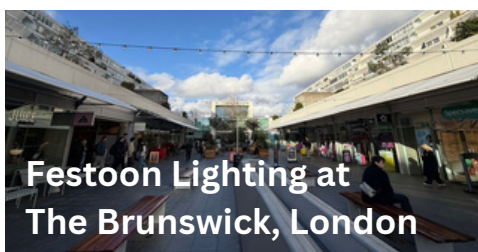


**Ian Wilford,
Managing Director,
IDWe Ltd**

Our team delivered a full **commercial office strip-out** and multiple wall removals at Crook Log Leisure Centre, Bexleyheath. Transforming a closed, outdated layout into a modern, open-plan workspace. Works also included **electrical alterations, plumbing isolation, and new partition installation.**

We worked quickly and safely, keeping disruption to a minimum, while maintaining a clean environment. This approach **created a more collaborative workspace.** We kept the project on track and helped the client move forward without delay.

 [Read Full Project](#)



Festoon Lighting at The Brunswick, London

Installed bespoke decorative festoon lighting to enhance the canopy atmosphere.

- ✔ Improved visibility across the space
- ✔ Delivered a clean, high-quality finish
- ✔ Created a warm, inviting environment

 [Read Full Case Study](#)



Pipework Freezing for District Heating Systems in Harrow



Using Liquid Nitrogen Pipe Freezing, we created **18 ice plugs** within live district heating pipework at Harrow View East, enabling essential works without shutdown.

Across six phased visits, we kept services live, reduced risk, avoided drainage, and supported specialist welding and system modifications.

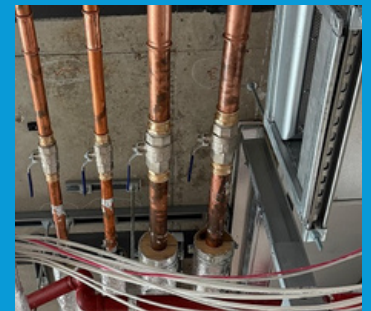
[Read Full Project](#)

LTHW & CHW Valve Installation in Victoria, Central London

[Read Our Story](#)

At 80 Victoria Street, London, we installed **LTHW and CHW isolation valves** using **eight controlled pipe freezes** on live systems where there were no existing valves.

This approach avoided shutdowns, reduced risk, and improved system control. While enabling **safe pipe modifications**, several **valve installations**, and full pressure testing.



Connect with us:



Can We Help You?

Discuss your next project now!

☎ 020 8302 7644 | ✉ info@idwe.co.uk | 🌐 idwe.co.uk

Replacement Control System at the Honourable Artillery Company

Our Sister Company



BMS | Control Panels | Automation

Key Highlights & Technologies Included:

- ✓ Design, manufacture and installation of a new **form 2 control panel**
- ✓ The control system was engineered around the **Trend IQ5 System**
- ✓ Providing a **9" touchscreen HMI** to allow user access to **Trend's IQView** functionality
- ✓ Remote access was provided via **Spitfires IoT**
- ✓ Improved efficiency and increased life expectancy of the control system.



Replaced legacy control panels with remote access

[Read Our Full Case Study](#)

➡ Thank you for reading. We look forward to working with you during the Spring / Summer.